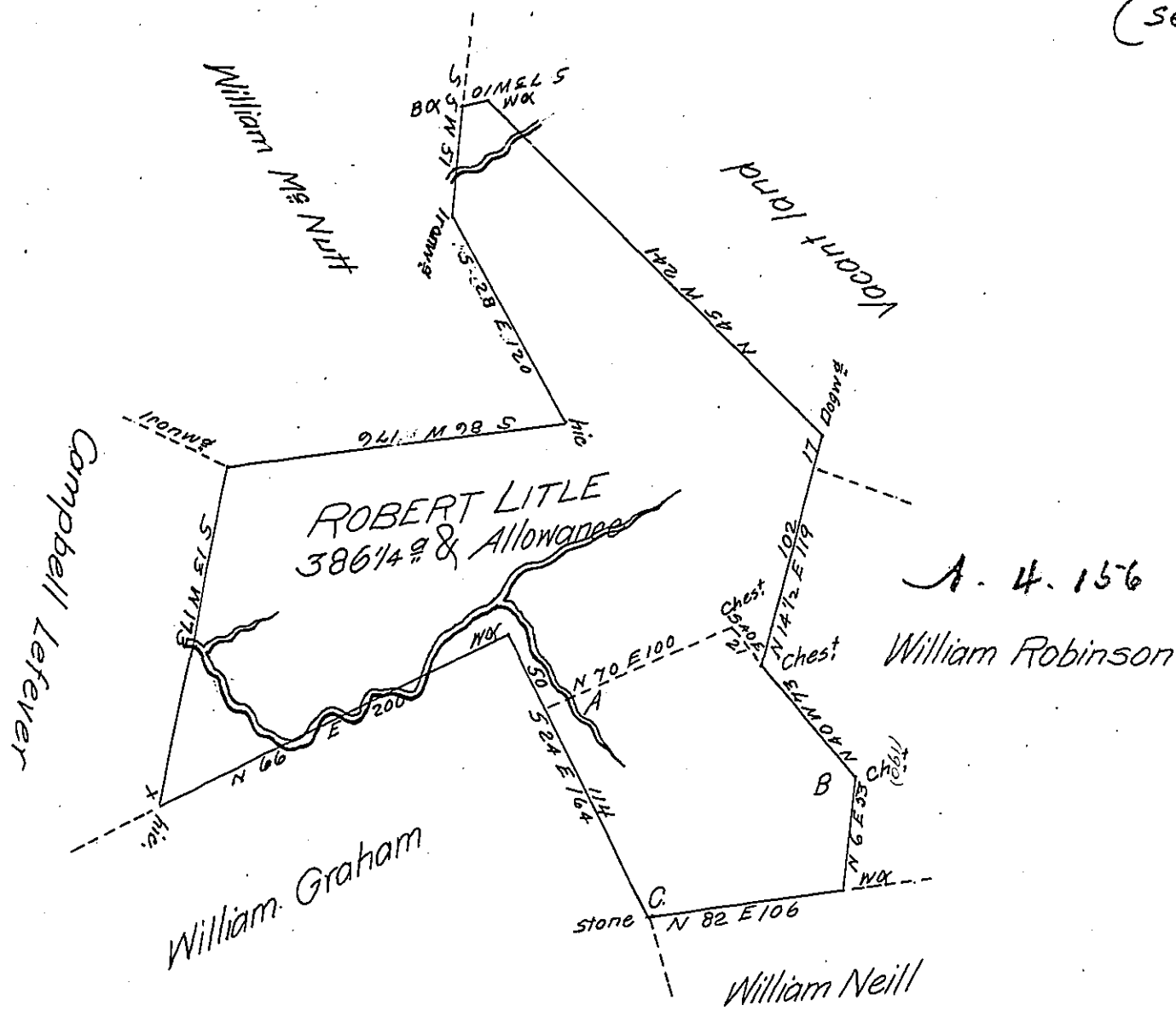


(see 201.)



Survey'd to Robert Little on the 20th March 1788 the above described Tract of Three Hundred and eighty six acres and one Quarter of an acre and Allowance of six P. Cent. Situate on the dividing Ridge between Crooked Creek and Black Lick adjoining land Survey'd for William Robertson & a Survey made for one Grimes, in Armstrong Township Westmoreland County by warrant of the 6th November 1787.

N.B. So much of the above Survey as the dotted lines & letters A B & C Represent was Survey'd to William Neill on the 8th January 1787 by warrant of the 1st July 1784
Joshua Elder D.S.

John Lukens Esq. S. Genl.

IN TESTIMONY that the above is a copy of the original remaining on file in the Department of Internal Affairs of Pennsylvania, made conformably to an Act of Assembly approved the 16th day of February, 1833, I have hereunto set my Hand and caused the Seal of said Department to be affixed at Harrisburg, this twentieth day of October 1905

George P. ...
Secretary of Internal Affairs.